

# Cumbria's Special Butterflies – Trip Itinerary

2024

Operated by Wildlife Tours & Education

---

## Tour Dates

5<sup>th</sup> June to 6<sup>th</sup> June 2024

£368

This is a short trip focusing on Cumbria for both Pearl Bordered Fritillary and Small Pearl Bordered Fritillary Butterflies.

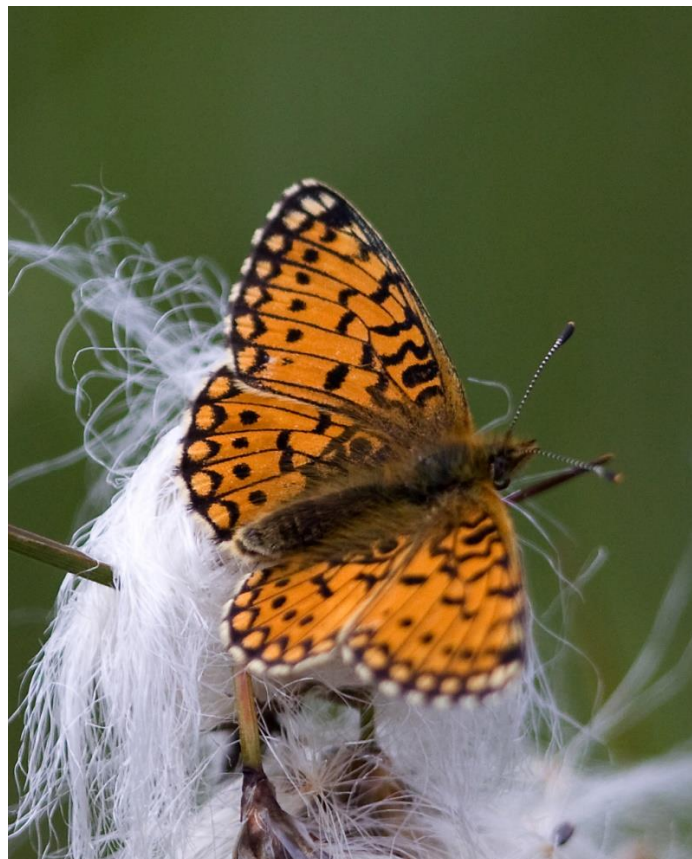
Departure is from Norfolk early morning of 5<sup>th</sup> June and drop off is in Norfolk late evening 6<sup>th</sup> April. Pick up and drop off 'en-route' can be arranged.

---

Day 1 Arrive Cumbria and explore Arnside Knot

Day 2 Explore White Crag and area before driving back South to Norfolk

---



Pearl Bordered Fritillary by Carl Chapman

Although we will endeavour to follow our planned programme due to bad weather and other considerations this is not always possible. You can rest assured that any alterations to our planned itinerary will be made to make maximum use of our time and weather conditions.

#### Overview

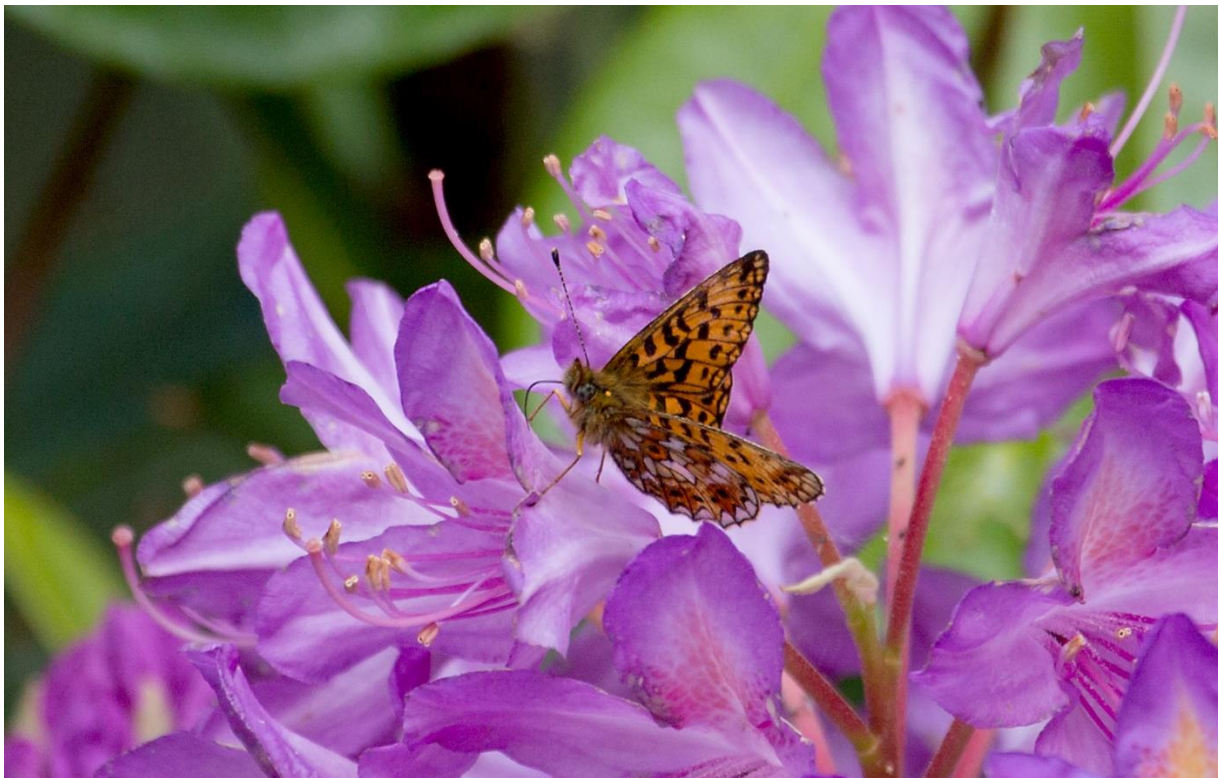
This is a short tour looking for two enigmatic and scarce butterflies; the Small Pearl Bordered Fritillary and the Pearl Bordered Fritillary. Many butterflies will also be on the wing in early June and we expect to see Northern Brown Argus among others.

#### Day 1 - Wednesday

We will start our journey to Cumbria early in the morning; picking up party members en route, we soon be at our chosen location seeking out butterflies. After our afternoon on the fells we will make our way the short distance to our very plush and comfortable hotel. The hotel where you will stay is a delight. This is accommodation I have used in the past and have nothing but admiration for the staff, the wonderful food, the gardens and the location within beautiful gardens.

#### Day 2 – Thursday

We will have a hearty breakfast before once again heading out onto the fells for butterflies. As well as our two target fritillaries we will search for other butterflies and of course we never ignore other wildlife on our tours and birds, mammal and other insects will play an important element in our enjoyment of the wildlife of this wild and beautiful area. Late on in the day and perhaps all too soon we will head back South to home.



Small Pearl Bordered Fritillary by Carl Chapman

We will also be dropping off en route back to Norfolk.



Northern Brown Argus by Carl Chapman

What is included?

Meals including lunches from lunch on day 1 to lunch on day 2 are included within the price. The evening meal on day 2 as we make our way back to Norfolk will be at your own cost.

Transport to and from Norfolk and pick up en route at suitable locations.

Any entrance fees to reserve areas we may visit.

Accommodation is normally in en suite rooms and lunches will be packed to give us more time in the field.

There is no single room supplement on this tour.

What is not included?

All drinks with meals and items of a personal nature.

Further notes.

This is a trip which will give us the maximum amount of time searching for butterflies therefore early mornings to make maximum use of our time in Cumbria will be usual. Most walking will be on level or gently undulating ground.

RSPB and Wildlife Trust Members are asked to bring along their membership cards in case we visit reserves.

Group Size.

3+

How to Book

Please telephone 07833 463 034 or 01263 837038 at a time convenient to yourself or email [carl@wildlifetoursandeducation.co.uk](mailto:carl@wildlifetoursandeducation.co.uk)

Carl Chapman  
Wildlife Tours and Education



Mobile **07833 463 034** Office **01263 837038** Website: [www.wildlifetoursandeducation.co.uk](http://www.wildlifetoursandeducation.co.uk)