

New Forest & Isle of Wight Tour – Trip Itinerary

2025

Operated by Wildlife Tours & Education

16th to 18th June 2025

£966

This is a trip is to encapsulate some scare and rare birds, plants and butterflies.

Departure is from Norfolk early morning of Monday 16th June and drop off is in Norfolk evening of 18th June. Pick up and drop off 'on-route' can be arranged.

- | | |
|-------|---|
| Day 1 | Travel South and visit various locations on route to the New Forest |
| Day 2 | Visit to the Isle of Wight |
| Day 3 | Local Reserves and journey home |
-



Glanville's Fritillary by Carl Chapman

Although we will endeavour to follow our planned programme due to bad weather and other considerations this is not always possible. You can rest assured that any alterations to our planned itinerary will be made to make maximum use of our time and weather conditions. It is imperative you note a trip out on a boat to the Farnes is only considered if the weather is suitable.

Overview

This is a tour to the New Forest and the Isles of Wight to see some of the amazing wildlife of the area. We will search out some of the scarcer butterflies and plants while looking to encapsulate some of the less scarce species.

There is much to see and photograph on this trip.

Day 1 - Monday

We set off from Norfolk in the early morning stopping depending on traffic we hope to arrive in the New Forest early afternoon. The heaths here hold a splendid array of birds such as Redstarts and a wealth of odonata such as Golden Ringed Dragonflies.

We will retire back to our accommodation for dinner but may go out later to see if we can see and hear Nightjars. After a full day we will be ready for a good nights' sleep.



White tailed Eagle by Carl Chapman

Day 2 - Tuesday

After a filling breakfast we will head towards Southampton to catch a ferry to the Isles of Wight. We hope to take in a number of species here including the rare Glanville's Fritillary and perhaps Ox-tongue Broomrape including the rare form 'lutea' as we walk along the white chalk cliffs that define the landscape. We will also search for the White tailed Eagles that are now nesting on the island.



Ox-tongue Broomrape – a rare plant of the form 'lutea'

We will return from the island late in the day and may eat at a different location during the evening.

We will however perhaps take a short walk to take in some wildlife sights and sounds of the night

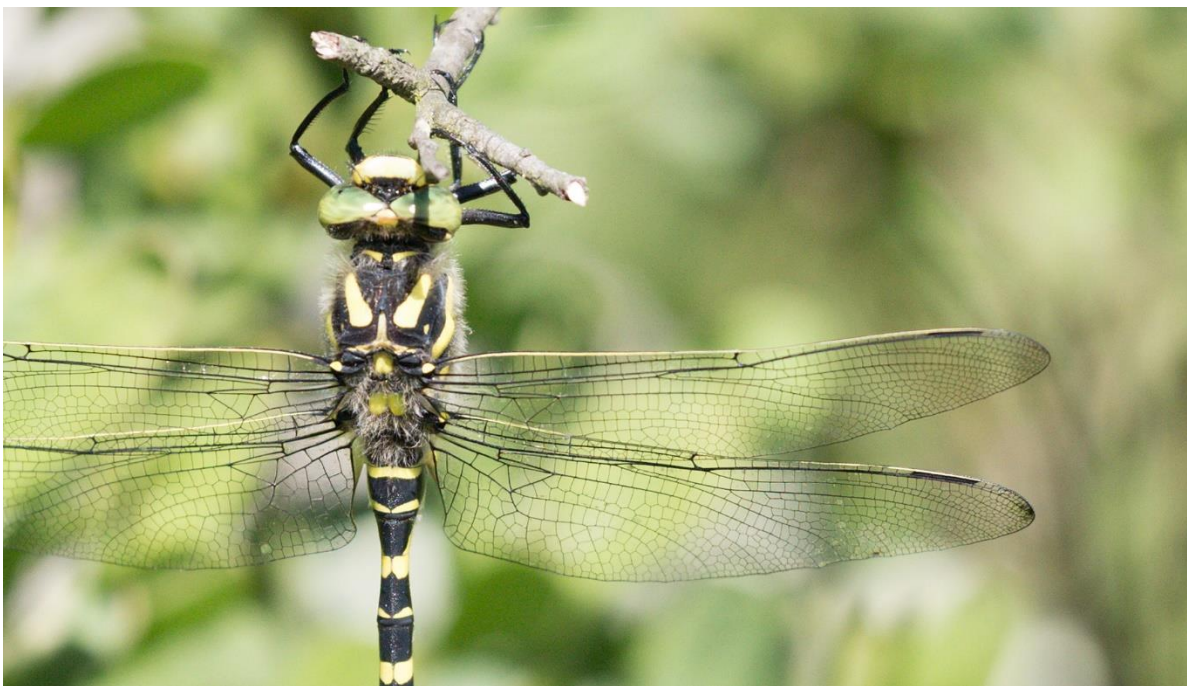


Nightjar – Carl Chapman

Day 3 – Thursday

After our breakfast we will again pay a visit to heathland areas where it may be possible to see Southern Damselfly as well as birds such as nesting Curlew and Spotted Flycatcher.

Shortly after we will make our way back to Norfolk maybe stopping to visit other places along the way.



Golden Ringed Dragonfly by Carl Chapman

What is included?

Ferry Trip to the Isle of Wight.

Photographic Tuition if desired.

All meals and lunches from lunch on day 1 to lunch on day 3 are included within the price.

Transport to and from Norfolk and pick up en route at suitable locations.

Accommodation is in en suite rooms and lunches will be packed to give us more time in the field.

A single room supplement of £85 is payable.

What is not included?

All drinks with meals and items of a personal nature.

Entrance fee to any reserves we may visit.

Further notes.

This is an easily graded trip with most walking being on level ground or ground with a slight incline.

Group Size.

4 Persons

How to Book

Please telephone 07833 463 034 or 01263 837 038 at a time convenient to yourself or email carl@wildlifetoursandeducation.co.uk

Carl Chapman
Wildlife Tours and Education



Mobile 07833 463 034

Office 01263 837 038

Website: www.wildlifetoursandeducation.co.uk